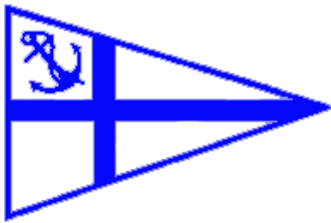


# JAMESTOWN YACHT CLUB



8/1/2015

## 2015 Summer Cruise

This booklet contains the details of this summer's cruise. We will head west, visiting Block Island, Shelter Island, Mystic Seaport and Stonington. We will be enjoying some of the most beautiful cruising ground in the world. Email me at [patriot367@yahoo.com](mailto:patriot367@yahoo.com) with any questions

Eddie Doherty – Cruising Chair

# Jamestown Yacht Club

## 2015 SUMMER CRUISE

### CRUISE OVERVIEW

The itinerary was designed to minimize adverse currents. We have a couple of laydays built into the schedule and will adjust as needed based upon the weather. Here is an overview of the cruise:

Day 1: Saturday August 1 – Depart Jamestown to Block Island – 20 nm

Day 2: Sunday August 2 – Depart Block Island to Coecles Harbor, Long Island – 34 nm

Day 3: Monday August 3 – Lay Day

Day 4: Tuesday August 4 -- Coecles Harbor to Deering Harbor – 7 nm (Mooring Reservation)

Day 5: Wednesday August 5 – Lay Day

Day 6: Thursday August 6 – Deering Harbor to Mystic Seaport – 26 nm (Dock Reservation)

Day 7: Friday August 7 – Lay Day Mystic Seaport

Day 8: Saturday August 8 – Mystic to Stonington, CT – 6 nm (Mooring/Dock Reservation)

Day 9: Sunday August 9 – Stonington, CT to Jamestown – 31 nm

**DURING TRANSIT JYC BOATS ARE ENCOURAGED TO MONITOR CHANNEL 72. RADIO CHECK IN WILL OCCUR ON THE HALF HOUR.**

**Reservation Information, please inform them you are with JYC:**

August 4 & 5 – Shelter Island Yacht Club – (631) 749-0888 or email [office@siyc.com](mailto:office@siyc.com)

August 6 & 7 – Mystic Seaport – (860) 572-5391 or email: [docks@mysticseaport.org](mailto:docks@mysticseaport.org)

**MYSTIC SEAPORT IS DOCK ONLY WITH THE COST AT \$4.50 PER FOOT. IT INCLUDES ENTRY FOR EVERYONE ON THE BOAT. THEY HAVE MEMBERSHIP RATES. THE SAVINGS FOR TWO NIGHTS FOR A “MARINER” MEMBERSHIP MIGHT BE A GOOD IDEA FOR YOUR BOAT.**

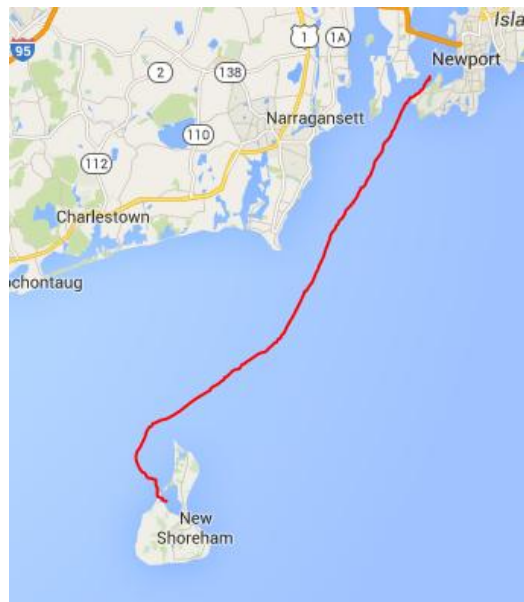
August 9 – Stonington, CT (Two Options)

Stonington harbor Yacht Club [www.shyc.us](http://www.shyc.us) or 860-535-0112 -- Dockage

Dodson Boatyard [www.dodsonboatyard.com](http://www.dodsonboatyard.com) or 860-535-1507 x117 – Moorings and Docks

## DAY 1 – SATURDAY AUGUST 1

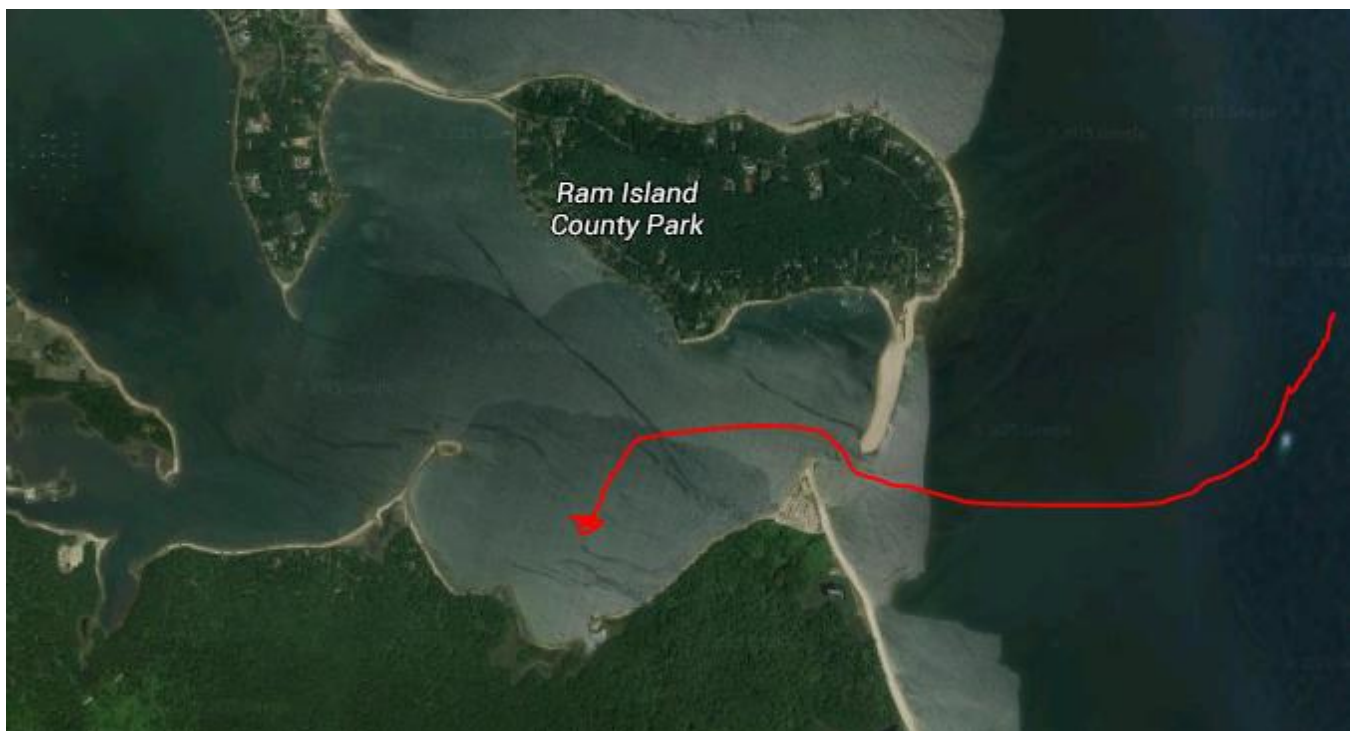
The fleet will depart Jamestown at their discretion. Current begins to ebb at 0942 in Narragansett Bay. Favorable Current at 1BI is only until 1238. It might be a good idea to deal with some negative current when leaving Narragansett Bay in the morning and then have it past Point Judith.



## DAY 2 – SUNDAY AUGUST 2<sup>ND</sup>

The trip from Block Island to Coecles Harbor has two main legs. The first leg is 26 nm at a bearing of 278M. The typical wind is SW or around 220M to 240M, meaning it's usually a close hauled sail. Favorable current is in the morning from 0733 to 1325. The second leg is after rounding 1"GI" is 245M for 7.5nm.

I will not be setting my departure time until the day before, once I know the weather forecast. I would really like to sail, so I might wait until the wind builds.

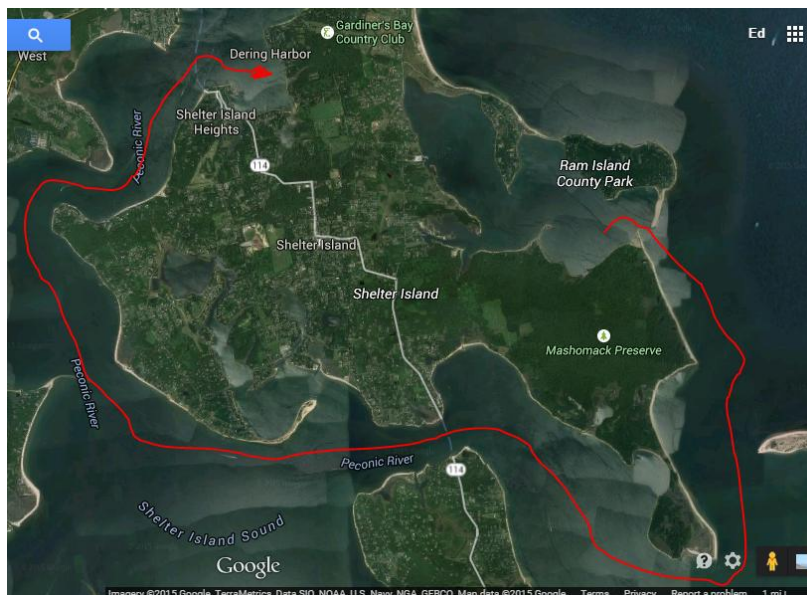


## DAY 3 – COECLES HARBOR – LAY DAY

The fleet will anchor in this beautiful and well sheltered harbor. If the conditions allow, the fleet will raft up. This is usually a highlight of the cruise. There is much to explore and the swimming is excellent.

## DAY 4 – COECLES HARBOR TO DEERING HARBOR – 7NM

This is a pleasant motor around Shelter Island. The fleet will depart around the same time and parade around the island.



## DAY 4 & 5 – DEERING HARBOR – SHELTER ISLAND YACHT CLUB

This area is a fun place to visit. You can rent bikes and explore the island or take the ferry over to Greenport.

Visiting yachtsmen are urged to reserve a mooring in advance. For information on availability, arriving yachts should hail the Shelter Island Yacht Club on VHF Channel 74 when approaching the island. Launch service is available by calling on Channel 74 or by sounding three blasts and displaying a "T" flag. Dinghies may land on the inland side of the southwest floating docks.

2015 Mooring Fees:

Boat length	to 35' = \$67	36'-52' = \$73	52+' = \$78
-------------	---------------	----------------	-------------

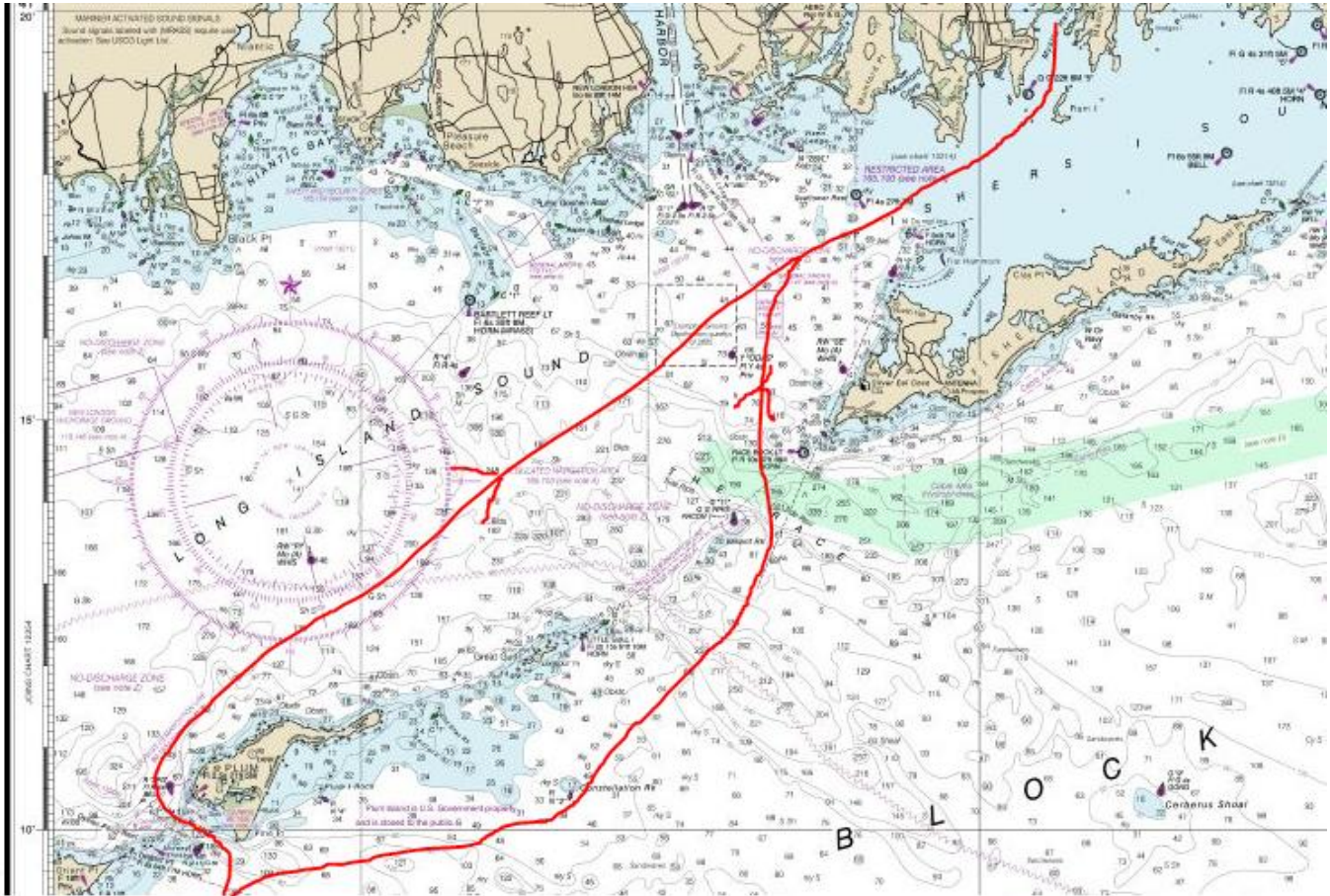




## DAY 6 DEERING HARBOR TO MYSTIC SEAPORT

This transit is the most challenging because of the current. We estimate leaving around 8am to go through the race at slack current. Plum Gut is an option as well. While we will be leaving in the morning, we will likely need to see what the forecast for the next day it.

The earliest we can arrive at Mystic Seaport is the 12:40pm bridge opening. The initial plan is for the lead boats to wait up at the entrance to the channel and then the fleet can parade up to the river to the seaport.



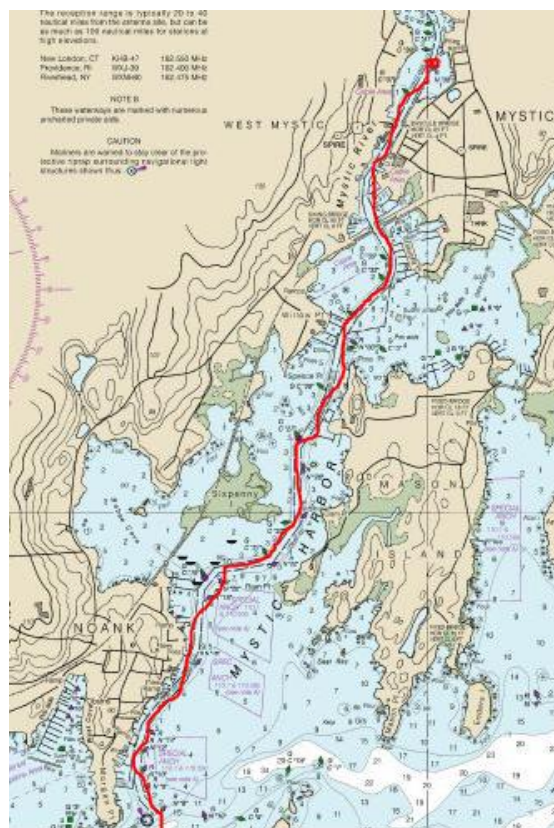
The trip up the river is very pretty and not too difficult the channel is well marked. The railroad bridge can cause some delay waiting for a train. The transit through the bridge in Mystic is really cool.

Mystic Seaport is an ideal destination, especially by boat. Located on the charming and historic Mystic River, we offer well-protected docks that are north of both bridges and just a short distance from Long Island Sound.

While docked at Mystic Seaport Marina, you will receive complimentary Museum admission. You can stroll through the 19th-century seafaring village, climb aboard historic vessels, and explore exhibit halls. You'll also have the unique opportunity to enjoy the beauty of our grounds in the evening after visitors are gone for the day, an experience that is the most magical part of their stay.

Dockage also includes free wireless internet, power, water, laundry facilities, and additional amenities. A courtesy van is available for trips to local grocery and marine supply stores. Downtown Mystic, located just a short walk from Mystic Seaport, offers a variety of dining and shopping options.

**WE HAVE RESERVATIONS FOR THE FLEET. PLEASE CONTACT THE SEAPORT ASAP AND MAKE YOUR RESERVATION UNDER JAMESTOWN YACHT CLUB. AFTER JULY 1<sup>ST</sup>, THEY WILL RELEASE THE RESERVATION. \$4.50 PER FOOT (LOA) — INCLUDES MUSEUM ADMISSION FOR THOSE ABOARD**



## DAY 7 – MYSTIC SEAPORT & NAUTICAL SCAVENGER HUNT

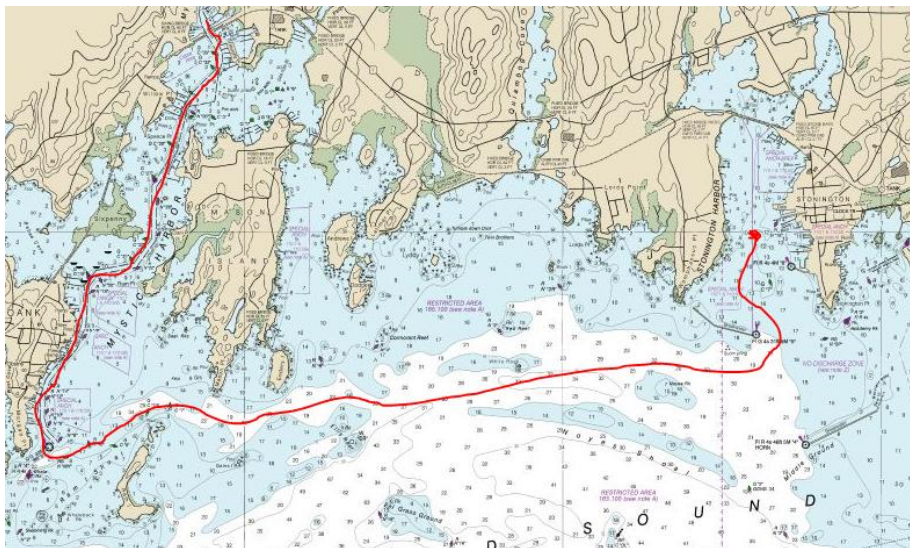
Admission to the Mystic Seaport is included, so please enjoy all it has to offer. There will be a nautical scavenger hunt for those who wish to participate. Open to all ages.

Mystic Seaport is 41° 21.57' N x 71° 57.92' W. Use U.S. chart #13214 and pay strict attention to the buoys. The channel is narrow and twisting; shoals abound just outside the channel. The Mystic River Railroad Bridge opens on call, unless a train is expected. The Mystic River Bascule Bridge (Route 1) opens at 20 minutes before each hour from 7:40 a.m. until 6:40 p.m. and opens on call prior to 7:40 a.m. and after 6:40 p.m. Both bridges monitor radio channels 9 and 13.



## DAY 8 – MYSTIC TO STONINGTON, CT

This is a short trip down the river and over to Stonington, CT



The fleet will likely have an end of cruise cocktail social.



194 Water Street  
Stonington, CT 06378  
Ph 860/535-1507 Fax 860/535-1462



**Stonington Harbor  
Yacht Club**

▼ HOME PAGE ▼ JR & FAMILY SAILING

[» Home](#)   [» Location](#)   [» About Us](#)   [» Services](#)   [» News](#)   [» Contact](#)

Stonington harbor Yacht Club [www.shyc.us](http://www.shyc.us) or 860-535-0112 -- Dockage

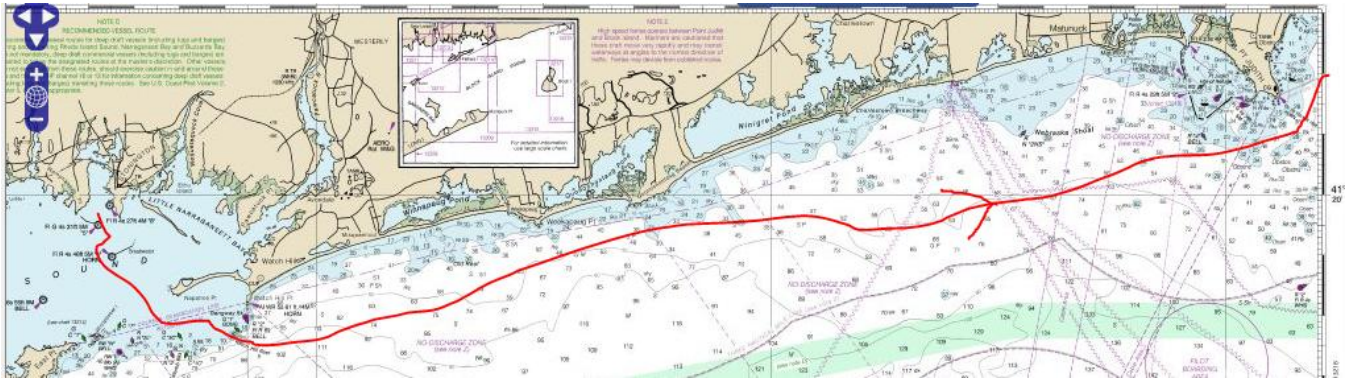
Dodson Boatyard [www.dodsonboatyard.com](http://www.dodsonboatyard.com) or 860-535-1507 x117 – Moorings and Docks

Stonington is Connecticut's oldest borough, settled by homesteaders from the Plymouth Colony. On the knoll known as Pine Point, a Victorian mansion crowned with an octagonal cupola, the Nathaniel Palmer House, attests to the fortunes a 19th century sea captain could aspire to here. History remembers Palmer's discovery of Antarctica, when he left Stonington at age 21 in search of new seal rookeries and found penguins instead. That was the least of his accomplishments, however. When clippers were the fastest things going (they got their name for 'clipping' days off of a cargo's ETA), their captains were as lionized as sports heroes of today.



## DAY 9 – STONINGTON, CT TO JAMESTOWN, RI

The currents are favorable in the morning and a departure around 0830 should allow for several hours of current helping us home.



Day	Date	Leg	Start	Finish	Bearing	Distance	Currents at:	Favorable	Max	Comments
Saturday	1-Aug	Jamestown to Block Island	R"6" Castle Hill 1"BI"	1"BI" R"2" New Harbor	magnetic 233 209 Total	Naut. Mi. 15.3 3.5 18.8	Castle Hill 1"BI"	0942-1630 0717-1238	1.4 at 1258 1.3 at 0858	ETD AM
Sunday	2-Aug	Block Island to Coecles Hbr	R"2" New Harbor 1"GI"	1"GI" Gardiners I. G"1" Coecles Hbr	278 245 Total	25.7 7.5 33.2	Carbares Shoal 1"GI"	0733-1325 0736-1339	1.3 at 1104 1.8 at 1022	ETD 0700 Wind usually on the nose
		ALT Route S. of Gardiners	R"2" New Harbor RW"M" Montauk Hbr	RW"M" Montauk Hbr N"2" Goff Point	261 252 252 292 330 352 352 292 Total	17.2 4.8 1.0 1.4 1.1 1.6 0.8 5.5 33.4	Goff PT Hog Creek Pt	0602-1223 0652-1227	1.8 at 0814 0.5 at 0950	ETD 0700 May be able to sail
Monday	3-Aug	Layover Coecles								
Tuesday	4-Aug	Coecles Hbr to Deering Hbr	G"1" Coecles RW"N" R"2" G"7" TP	RW"N" R"2" Long Beach Pt. G"7" TP Hay Beach Pt. Deering Hbr.	25 292 305 280 228 Total	2.0 1.8 1.1 0.7 1.4 7.0	Hay Beach	1009-1633	2.1 at 1241	ETD late AM
Wednesday	5-Aug	Layover Deering Harbor								
Thursday	6-Aug	Deering Hbr to Mystic	Deering Hbr TP G"7" R"2" RW"N" 1"GI" TP Whale Rock	TP Hay Beach Pt G"7" R"2" Long Beach Pt. RW"N" 1"GI" Gardiners I. TP off N. Dumpling Rock Whale Rock Mystic R. Drawbridge	48 100 125 112 74 47 66 Channel Total	1.4 0.7 1.1 1.8 6.0 10 2.2 2.5 25.7	Hay Beach 1"GI" East of Little Gull I. S. of Ram I	0556-1203 0446-1111 0506-1124 1641-2316	1.3 at 0656 1.8 at 0750 4.8 at 0702 1.9 at 1930	ETD 0800 Take advantage of morning currents, thru race at slack, buck current in FI Sound. cross current in race
		Alt route thru Plum Gut	Deering Hbr TP G"7" R"2" RW"N" thru gut R"2PG" TP Whale Rock	TP Hay Beach Pt G"7" R"2" Long Beach Pt. RW"N" Plum Gut R"2PG" TP FI Sound Whale Rock Mystic R. Drawbridge	48 100 125 112 40 0 66 66 Channel Total	1.4 0.7 1.1 1.8 4.5 0.5 10.5 2.2 2.5 25.2	Hay Beach Plum Gut Bartlett Reef S. of Ram I	0556-1203 1017-1627 1622-2207 1641-2316	1.3 at 0656 2.2 at 1255 1.4 at 1849 1.9 at 1930	Curents are unfavorable unless you want a late day sail with arrival at dusk
Friday	7-Aug	Layover Mystic Seaport	(or go to Stonington)							
Saturday	8-Aug	Mystic to Stonington	Mystic River Bridge Channel N. of Ram I. C"1" Ram I Stonington Breakwater	River Entrance at Daybeacon C"1" Ram I Stonington Breakwater Dobsons	Channel Channel 98 28 Total	2.3 0.6 2.8 0.9 6.6	S. of Ram I	0220-1236	1.5 at 0905	Short trip
Sunday	9-Aug	Stonington to Jamestown	Dobsons Breakwater G"3" R"8" Napatree R"2" Watch Hill R"4" Hbr of Refuge TP	Breakwater G"3" R"8" Napatree R"2" Watch Hill R"4" Hbr of Refuge R"6" Castle Hill	208 201 138 105 95 95 53 Total	0.9 0.7 1.3 1.4 16.2 2.0 7.6 30.1	Napatree Pt Quonochontaug Beach Pt Jude Castle Hill	0724-1325 0858-1350 0839-1353 1133-1700	1.9 at 0947 0.4 at 1045 0.4 at 1041 0.7 at 1432	ETD mid morning to ride currents

Cruise Information – Courtesy of Vic Calabretta